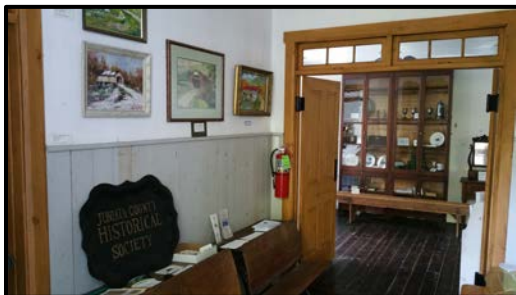




The Society's museum is located in the only surviving building of the Tuscarora Academy, the site of the first secondary school in Juniata County. The museum has exhibits highlighting the County's past, including:

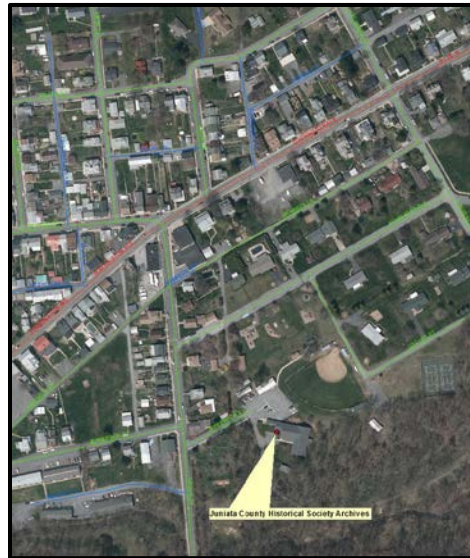
- The old Walnut Post Office
- An old time doctor's office
- A typical Academy boarding room for both a male and female student
- Hosecart #3 from the Port Royal Friendship Fire Company
- Items from Hertzler's Store in Old Port
- The Pie Lady from Zimmie's Diner

**See our Academy Brochure for more information*



Juniata County Historical Society

Where Are We Located?



Contact Us

Phone: 717-436-5152



Address: 498 Jefferson St. Suite B
Mifflintown, PA 17059

Email: jchs1931@juniatacountyhistoricalsociety.org

Web: www.juniatacountyhistoricalsociety.org



The Juniata County Historical Society

Est. 1931



Archives Hours

Tuesdays: 10 A.M. - 4 P.M.

Wednesdays: 10 A.M. - 1 P.M.

**Winter Hours By Appointment*



Founded in 1931, the year of the County's Centennial celebration, the Juniata County Historical Society's Mission is the discovery, preservation and publication of Juniata County's history.

Our Archives Room is located in the lower level of the County Library in Mifflintown, where all of the Society's resources for historical and genealogical research are located. In the winter months the Juniata County Historical Society's Archives Volunteers work flex hours. Please call ahead to confirm that the Archives Room is open. We will try to accommodate research in the Archives Room at times other than our normal hours if arranged in advance. Please call or email the Archives Room at least 4 weeks in advance of your visit to Mifflintown.

Donations

Government funding supplies less than one-quarter of the annual budget. The rest of the funds comes from membership dues, research fees and donations. The Society could not function without the generosity of private donors. Donors may specify that their money goes to the Pomeroy-Academia Covered Bridge, Tuscarora Academy, General Operating Expenses, or Where Most Needed.



Membership

Membership in the historical society is available for an individual family, student, business/civic organization, corporate, or member for life. Annual Members receive a year of membership from the time they join.

Membership includes unlimited usage of the archives within the duration of membership and a quarterly newsletter.

Cost of Membership

Individual - \$20

Family - \$25

Student - \$5

Business/Civic Organization - \$50

Corporate - \$100

Life - \$200

Spousal Life - \$300

Resources

Items in the Archives include:

Surname Files, Marriage Index 1800-1995, Obituary Index 1828 - 2002, Cemetery Index, Compiled Tax Indexes, Original Tax Assessments and Enumerations 1831-1846, Voter Registry Rolls, Civil War Veteran's Index, Various Death Records, Record of Births 1893 - 1907, Various Compiled Genealogies, Jury Selections 1851, 1875-1890, 1896-1911, Township Military Records, Register of Orders Issued by the Commissioners, & Commissioners Minutes

Resources Continued

Overseer of the Poor Records, Register of County Poor Records 1932, Church Records, *History of the Susquehanna and Juniata Valleys* Volume I and II, *Commemorative Biographical Encyclopedia of the Juniata Valley Comprising the Counties of Huntingdon, Mifflin, Juniata and Perry Pennsylvania Containing Sketches of Prominent and Representative Citizens and Many of the Early Settlers*, Various Maps, Large Photo collections, Census Records, & Local Newspapers

Locations Owned by the Historical Society:

- Pomeroy Academia Covered Bridge
- Tuscarora Academy Museum
- McAlisterville Academy Monument
- Licking Creek Baptist Church
- Fort Patterson Monument
- Village of Mexico 250th Anniversary Monument
- Glebe Cemetery

Other Locations of Interest

- Book Indian Mound
- Wilson House Bed & Breakfast
- Juniata Valley Winery
- Olivero's Vineyard
- Mifflin/Juniata Canal Park
- Juniata County Courthouse
- Juniata County Fairgrounds
- Fort Bigham Monument
- Spruce Hill Lunch