

The current courthouse is actually the second one used to house the county's government. The First Juniata County Courthouse was actually constructed in 1833 according to plans prepared by Thomas McCurdy. The plans were accepted by the County Commissioners and a contract was made with Ames Gustine and Everett Oles for the erection of a courthouse at a cost of \$3,940.00.

The first courthouse was in use until 1873 when the building was razed.



Original Courthouse

Juniata County Historical Society

About Us

Founded in 1931, the year of the County's Centennial celebration, the Juniata County Historical Society's Mission is the discovery, preservation and publication of Juniata County's history.

Our Archives Room is located in the lower level of the County Library in Mifflintown, where all of the Society's resources for historical and genealogical research are located.

The Society utilizes an all-volunteer staff to provide public hours of operation on Tuesdays from 10 AM to 4 PM and Wednesdays from 10 AM to 1 PM except for the winter months.

Contact Us

Phone: 717-436-5152

Address: 498 Jefferson St. Suite B
Mifflintown, PA 17059

Email:
jchs1931@juniatacountyhistoricalsociety.org

Web: www.juniatacountyhistoricalsociety.org



The Juniata County Courthouse

*Completed
1875*



Present Courthouse

Publication Courtesy of:



Thank you for visiting the Juniata County Courthouse! Built in 1875, this Historic structure is has been the center of Juniata County Government for almost 150 years. This building currently houses the courts, District Attorney's Office, the County Detective, Register & Recorder, Prothonotary, Assessment Office, Planning Office, Tax Claim, and Voter Registrar's Office.

For more information on these county offices visit the county website at:

www.co.juniata.pa.us

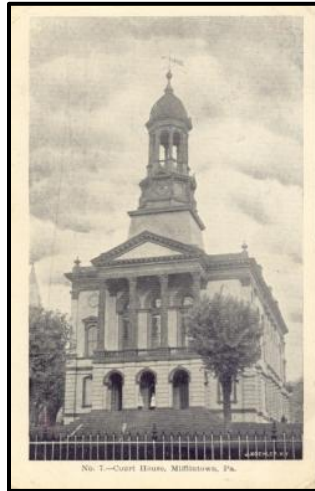
Courthouse Hours:

Monday – Friday

8 A.M. to 4:30 P.M.



@ Juniata County Government



In May, 1873 Mr. L.M. Simon, an architect from Harrisburg was requested to draw plans for a new courthouse. On June 1, 1873, a contract was made with John B.M. Todd to deliver at the courthouse 425,000 good brick & 20,000 pressed brick. In July 1873 advertisements for proposals were prepared and bids for the “erection and enlargement of the Court House” were accepted by the commissioners on August 11. 1873.

Messers. Hetrich & Fleisher of Newport, Perry County, were awarded a contract to build a new courthouse in accordance with plans and specifications for the sum of \$42,100.00, to be completed by January 1, 1875. The courthouse was completed according to contract with the addition of a bell tower, clock, furniture, pavement, fences and other improvements for a total cost of \$63,000.00.

Some of the improvements done to the building over the years include the installation of steam heat in 1910. The exterior plaster was sandblasted off and the brick repointed in 1974. In 1990, new plumbing was installed for air conditioning and a sprinkler system, and an elevator was added for handicap access to the 2nd and 3rd floor. In 2010, the original bell tower was deemed structurally unsound and was rebuilt to match the original design. The roof and windows were replaced using historically accurate replacement windows. Original wood doors were salvaged, repaired and rehung, all exterior trim was stripped and repainted.

On July 1st, 2016 an open house was held to showcase the new tile floor. The floor was replaced with tile from the same manufacturer as used in the original floor and the center design tiles were reused. A revolving display of county artifacts has been setup in the bookcases in the hallways by the Juniata County Historical Society.

